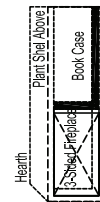


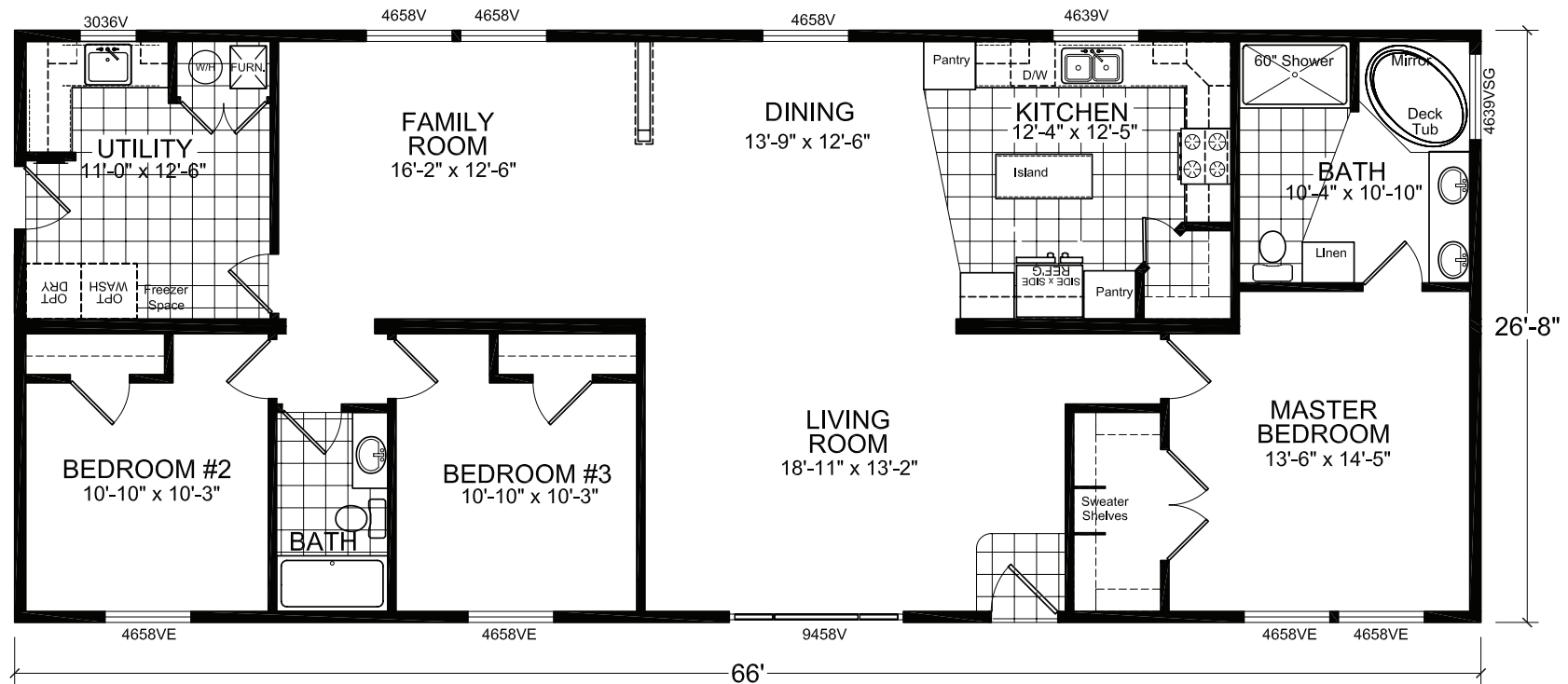
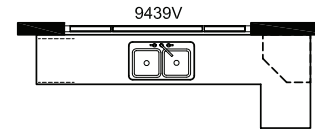
# Holiday House



**CHAMPION**  
HOMES of IDAHO



OPT. FIREPLACE



Model 1185X

3 Bedrooms, 2 bath

1,760 Sq.Ft

- WIDTH & LENGTH MEASUREMENTS are approximate overall dimensions, not including any roof overhangs.
- SOME TIRES, WHEELS AND AXLES have been reused after inspection for safety.
- ROOM SIZES are approximate inside wall-to-wall dimensions.
- NO DIMENSIONS HEREIN are to be used for set-up of home on site: consults selling retailer for exact specifications.

NOTE: Champion Home Builders Co. reserve the right to make changes at any time in prices, colors, materials, equipment specifications and models and discontinued models without notice or obligations. All dimensions and specifications are nominal. Data shown is basic information for the prospective buyer effective at time of issuance of this literature. Retailer will provide complete up-to-date information on available equipment, specifications, etc. not shown or noted here. Items referred to as being available or optional are at extra cost.

# SX Series Features



**CHAMPION**  
HOMES of IDAHO

Interior	Exterior	Bath	Kitchen	Utilities, Safety & Energy	Options
<p><b>Cathedral ceiling</b> with a light “orange peel” texture creates an open feeling.</p> <p><b>Tape and textured finished drywall throughout</b> includes wall-to-ceiling joints, for a custom home appearance with several paint choices.</p> <p><b>2x4 interior walls</b> on 16” centers strengthen walls and provide versatility in decorating.</p> <p><b>Double 2x4 marriage wall</b> adds vertical strength and supports the massive continuous ridge beam, which allows versatility of floor plans.</p> <p><b>White embossed passage doors</b> with triple hinges and massive casings add strength and longevity.</p> <p><b>Casual Saxony carpeting</b> with a 1/2” rebond pad provides high performance in a wide variety of color choices.</p> <p><b>2” faux wood blinds and colorful valance choices</b> give the ability to adjust light and privacy.</p> <p><b>Wood closet and pantry shelving</b> adds strength and presents a clean storage appearance.</p> <p><b>Vinyl entry way</b> is easy to clean and protects carpet from outside dirt.</p> <p><b>Rocker light switches</b> for ease of operation.</p> <p><b>Satin-Nickel door hardware</b> for a soft custom look.</p> <p><b>Upgraded painted wood moulding package</b> for lasting appeal.</p>	<p><b>2”x 6” exterior wall framing</b>, (90” high and 16” on center), for superior structural strength and allows an R-21 HD insulation for energy savings.</p> <p><b>30# roof load with a standard 3:12 pitch</b> allows customization for various regional areas. (Additional roof loads and pitches available).</p> <p><b>5/8” floor decking</b> is strong, resists warping and is glued and fastened to floor joists on 16” centers for maximum stability.</p> <p><b>Choice of fiber cement or vinyl exterior siding</b> allows color versatility and low maintenance.</p> <p><b>Attractive and functional roof dormers</b> accents architectural appeal —per plan.</p> <p><b>Nominal 12” eaves on the front, back and ends</b> for increased weather protection of exterior siding. (Shipping restrictions may apply).</p> <p><b>36” Steel “Mission” insulated front door and 32” insulated 9-lite rear door with dead-bolt</b> for safety, efficiency and noise reduction.</p> <p><b>Foundation ready frame</b> is recessed for stem wall applications.</p> <p><b>25 year “Class A” fire rated fiberglass shingles</b> in several color choices provide security and versatility.</p> <p><b>Vinyl dual pane low-E windows</b> are quiet, energy efficient, easy to clean, reduce sun damage and never need paint.</p>	<p><b>Glamour bath with deck tub and separate stall shower</b> provides an elegant retreat for life’s everyday stresses.</p> <p><b>Satin nickel lighting fixtures above mirrors</b> are elegant and coordinates with the home’s décor.</p> <p><b>60” 1 piece fiberglass tub/shower in the guest bath</b> is durable, attractive and easy to clean.</p> <p><b>Satin Nickel, single lever tub/shower diverter and single lever sink faucets</b> are attractive, durable and have one hand temperature control.</p> <p><b>36” height lavatory cabinet in master bath</b> provides a much more comfortable height for your bathroom routine.</p> <p><b>China lavatory sink</b> has a contemporary look with an elegant design and is easy to clean up.</p> <p><b>Satin Nickel towel bar and paper holders</b> are conveniently placed to provide maximum efficiency.</p> <p><b>Bath exhaust fan</b> circulates air flow and reduces moisture in the room.</p> <p><b>4” ceramic tile backsplash</b> coordinates with countertop laminate and provides moisture protection.</p> <p><b>32” lavatory cabinet height in guest bath</b> provides a convenient height for smaller members of the family.</p> <p><b>Elongated toilets in both baths</b> have a comfortable fit and elegant design conforming to low-flush requirements.</p>	<p><b>Drawer over door cabinet construction</b> has plentiful drawers and provides ample storage space.</p> <p><b>Bank of 3 drawers with oversized bottom drawer</b> provides additional storage for those larger items.</p> <p><b>“Russian Birch” plywood drawer sides</b> are real wood and will stand up to every day use.</p> <p><b>30” lined overhead cabinets with adjustable shelves</b> are easy to clean and customizable to your storage needs.</p> <p><b>Upgrade GE™ Range with oven window and timer</b> is more convenient with its modern features.</p> <p><b>22cf GE™ refrigerator with ice &amp; water in the door</b> gives you name brand confidence with large food storage capacity.</p> <p><b>“Cityscape” overhead cabinets with crown molding</b> provides a custom decorator look to enhance cabinet craftsmanship.</p> <p><b>MDF cabinet doors and face frames</b> provide consistent grain pattern for a uniform look and easy cleaning.</p> <p><b>8” deep stainless steel kitchen sink</b> has a contemporary look and easy cleanup.</p> <p><b>Satin Nickel single-lever kitchen faucet with pull out sprayer</b> is attractive, durable and has one hand temperature control.</p> <p><b>6” ceramic tile backsplash</b> coordinates with countertop laminate and provides moisture protection.</p> <p><b>6” Recessed can lights</b> in the kitchen (and pendant lights over the island, per model) are sleek, contemporary and provide light in just the right places.</p>	<p><b>Choice of All Gas or All Electric</b> at no additional charge. (All gas comes with electric dryer connection. Mixing gas and electric is optional).</p> <p><b>40 Gallon gas or electric water heater</b> (available in 50 gallon gas or electric) provides abundant safe hot water supply for showers, kitchen and laundry.</p> <p><b>Attractive hollow core sheetrock lined water heater and furnace door</b> (when possible) allows easy access, reduces noise and gives a much richer look to the furnace and water heater area.</p> <p><b>100 amp or 200 amp electric service</b> is sized right to give your home ample capacity to meet your power needs (oversizing can cause unnecessary additional site expense).</p> <p><b>R-30 Roof insulation</b> <b>R-21 Wall insulation</b> <b>R-22 Floor insulation</b> provides affordable comfort year round.</p> <p><b>Whole House shut-off valve</b> is an easy access to shut off all the water to your home without getting under it.</p> <p><b>Individual water shut-off’s at all exposed water lines</b> to easily shut off water to commodes and faucets without interrupting other areas.</p> <p><b>Shelf over washer/dryer</b> area provides extra storage and keeps laundry supplies organized.</p> <p><b>Smoke detector in each bedroom and living area</b> are hard-wired with a battery back up to protect your family against fire.</p> <p><b>Whole house ventilation system</b> reduces moisture, helps prevent condensation, equalizes barometric pressure and brings fresh air into your home.</p>	<p><b>Energy Star™ Package</b> seals and insulates your home to maximize your heating and cooling dollar. (R-40, R-21, R-33). Living green!</p> <p><b>Many appliance options</b> offer several quality GE™ appliance upgrade choices, including stainless steel and black.</p> <p><b>Solid-Surface countertops</b> offer beauty, durability and add that designer touch.</p> <p><b>Peaked Tower Dormer</b> to enhance the exterior appearance and add light.</p> <p><b>Laminated flooring</b> in the kitchen and dining areas for easy care and convenience.</p> <p><b>Choice of hardwood cabinets and deluxe drawer guides</b> highlight the beauty and convenience of kitchens and baths.</p> <p><b>Several carpet choices and upgrades</b> can change the mood of any home.</p>

WIDTH & MEASUREMENTS are approximate overall dimensions. Not including any roof overhangs.  
SOME TIRES, WHEELS AND AXLES have been reused after inspection for safety.  
ROOM SIZES are approximate inside wall-to-wall dimensions.  
NO DIMENSIONS HEREIN are to be used for set-up of home on site; consults selling retailer for exact specifications.

NOTE: Champion Home Builders Co. reserve the right to make changes at any time in prices, colors, materials, equipment specifications and models and discontinued models without notice or obligations. All dimensions and specifications are nominal. Data shown is basic information for the prospective buyer effective at time of issuance of this literature. Retailer will provide complete up-to-date information on available equipment, specifications, etc. not shown or noted here. Items referred to as being available or optional are at extra cost.